

Blueprint OneWorld

Presented by: Isabelle Kerdravat, European Business Consultant

The ICSA – HQ London, UK

The ICSA is the international qualifying and membership body for the Chartered Secretary profession and the world's leading authority on governance.

- Founded in 1891 and was granted its Royal Charter in 1902
- 36,000 members and students worldwide, represented in over 70 countries
- Recognised global authority on corporate governance & regulatory issues
- Not-for-profit organisation

ICSA Software International – HQ London, UK

- **Respected** - The software company of the ICSA
- **Established** - formed in 1985 to develop softwares to assist corporate secretaries worldwide
- **Trusted** - over 2,500 companies use our softwares
- **Leaders** – we are the world’s leading provider of entity management, corporate compliance & governance software
- **Great people** – 95+ members of staff

Global reach, local presence

10 offices and partners globally are uniquely placed to ensure your global requirements are met with input from our local people



Office: ■ UK (*Head office*) ■ Australia ■ UAE ■ France ■ USA

Partner: ■ South Africa ■ Switzerland ■ Malaysia ■ Mauritius (Offshore) ■ Ireland

World leader in integrated governance, risk & compliance solutions

Entity Management

Our entity management solutions place you in control of your company secretarial data

Governance & Compliance

Designed to help companies centralise and simplify their processes, and remain compliant with local legislation

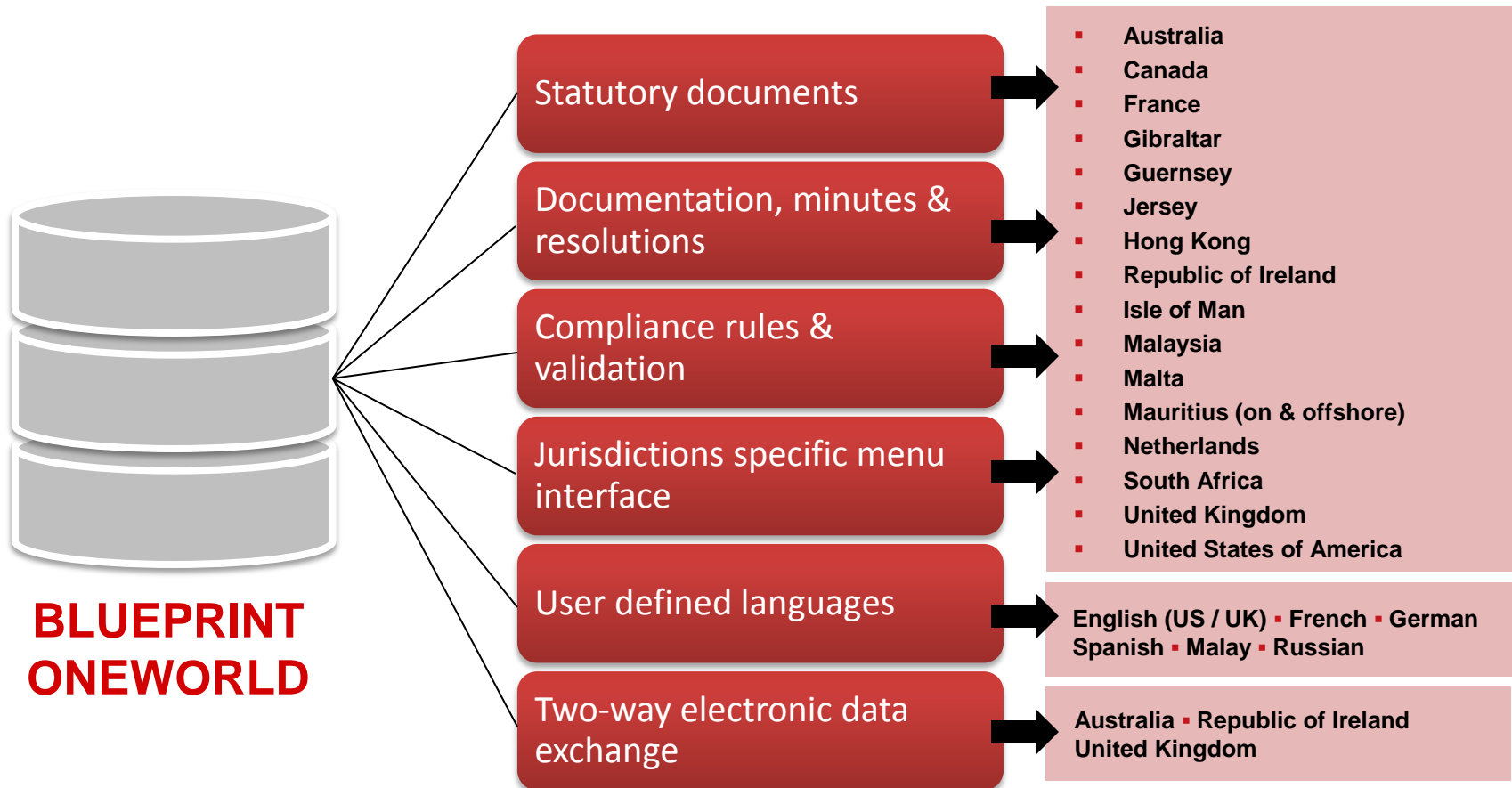
Services

We offer unrivalled support to ensure our clients achieve the maximum return on their investment in our software

Standalone or integrated

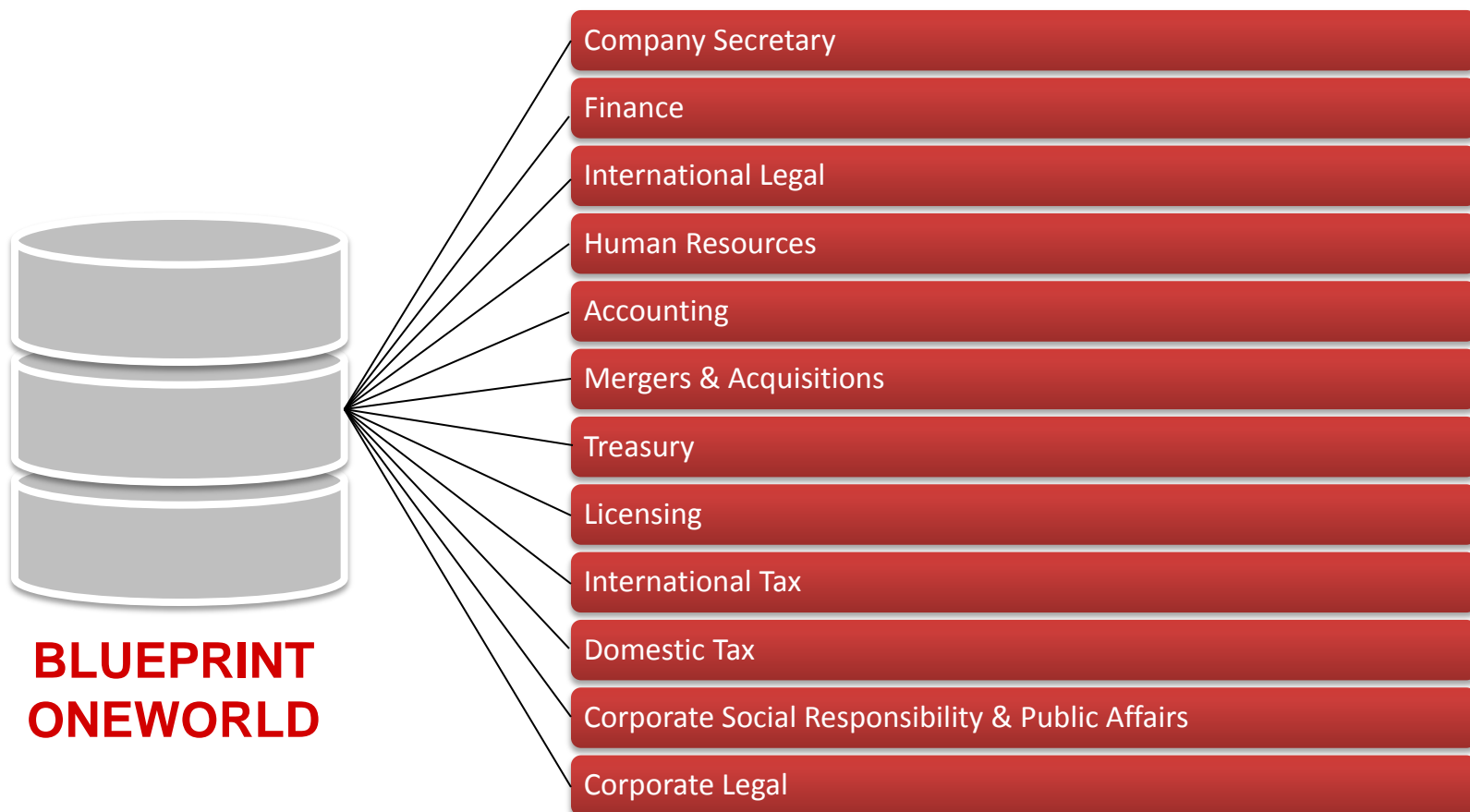
Add-on Modules

Local compliance on a global scale



A repository for all corporate information

Our solutions provide a single, online global authoritative solution to record, measure, analyse and report on all company related information.



World leaders choose ICSA Software / by country

- **FTSE100 companies:** 75
- **FTSE250 companies:** 150
- **European companies:** 21 of the top 50
- **American companies:** 4 of the top 10
- **Australian companies:** 7 of the top 10



London
STOCK EXCHANGE



Clients: United Kingdom

TaylorWimpeyplc

HSBC 

STANDARD LIFE® 


Unilever

Associated
British Foods
plc



nationalgrid


BRITISH
AIRWAYS

DIAGEO



sportingbet®

BT 



 OLD MUTUAL | plc

STAGECOACH GROUP
greener smarter travel

WPP




United Business Media

Balfour Beatty

Daily  Mail

Clients: Europe





Clients: Asia Pacific, Africa & Middle East



MULTIPLY



- Web based application
- Available in English, French, German, Spanish, Russian and Malay
- Documents can be held as pending or awaiting approval allowing full workflow control
- Wizards
- Full document management - does not allowed incorrect data to be entered and notify you when information is missing

20 reasons to use Blueprint

- Report available in Excel, Word or Html format
- E-filing of statutory forms for UK
- Produce statutory paperwork for a large number of countries
- Ad-hoc reporting - 'point and click' Report Generator
- ICSA Software International offices all around the world
- Automatic Group charting (can be exported to Visio, OrgPlus)
- Beneficiary Owners Management
- Agenda

- Compliance diary
- Alerts
- Clone and Preferences
- Configure your software as you like it (e.g. portals)
- Secured modules
- Tracking
- Data library

- Many financial authorities **require** listed **companies** to **maintain lists** of individuals who have access to **Insider information**.
(Eg. European Market Abuse Directive)
- Insider Manager enables you to easily **create, manage, store** and **report** on your Insider Lists

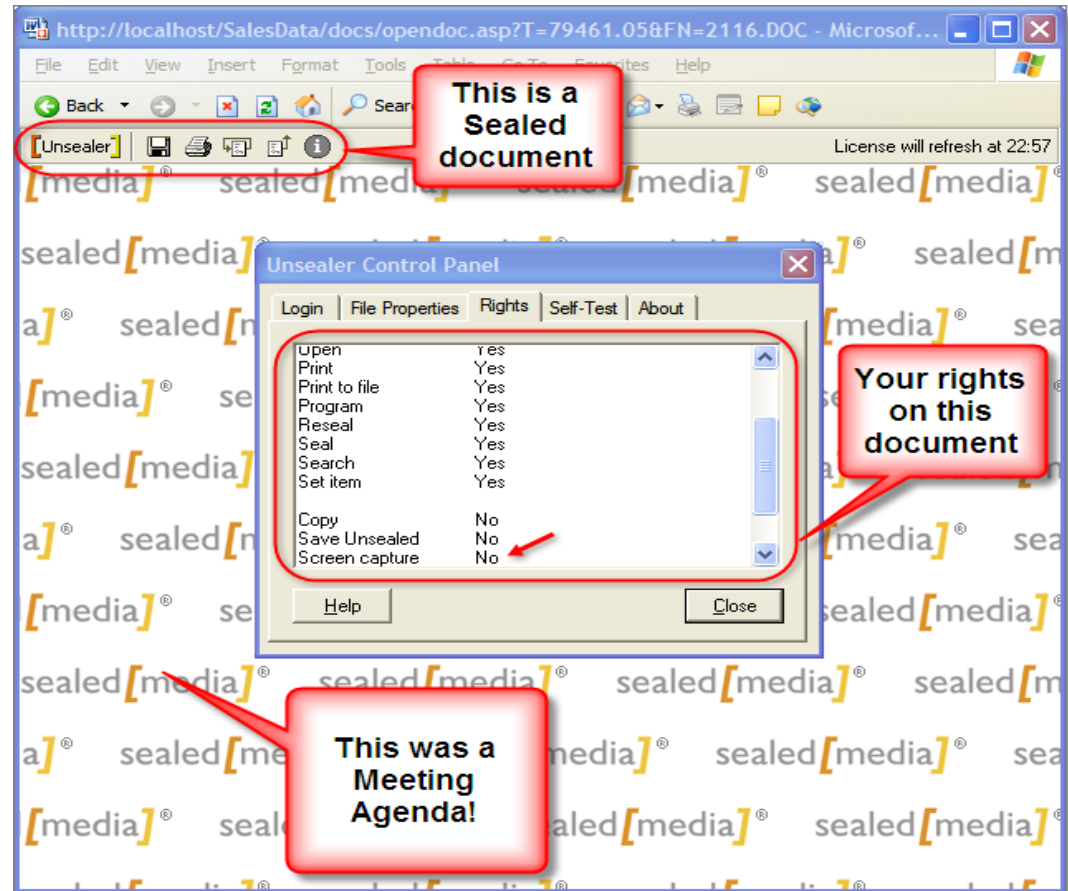
Other Connected Entities	
Entity Type	Name
Corporate	A & J Roylance and Associates

Insider Details	
Attach Insider as Other Connected Entity	
<i>Why does this Insider require access to Insider Information?</i>	
Reason for inclusion:	Solicitors
Date included on Insider List:	07/07/2006
Date of initial access to Inside Information:	07/07/2006
Insider Email Address:	julie.smith@ajra.com
Date 'Insider Procedures' sent:	07/07/2006
Date 'Insider Procedures' signed:	
Is Insider an Adviser:	Yes
Has Insider List been delegated to Adviser:	Yes
Date access to Inside Information ceased:	
Additional Information:	Julie Smith is the principle contact and will manage A & J Roylance and Associates insider details on their own Blueprint system.

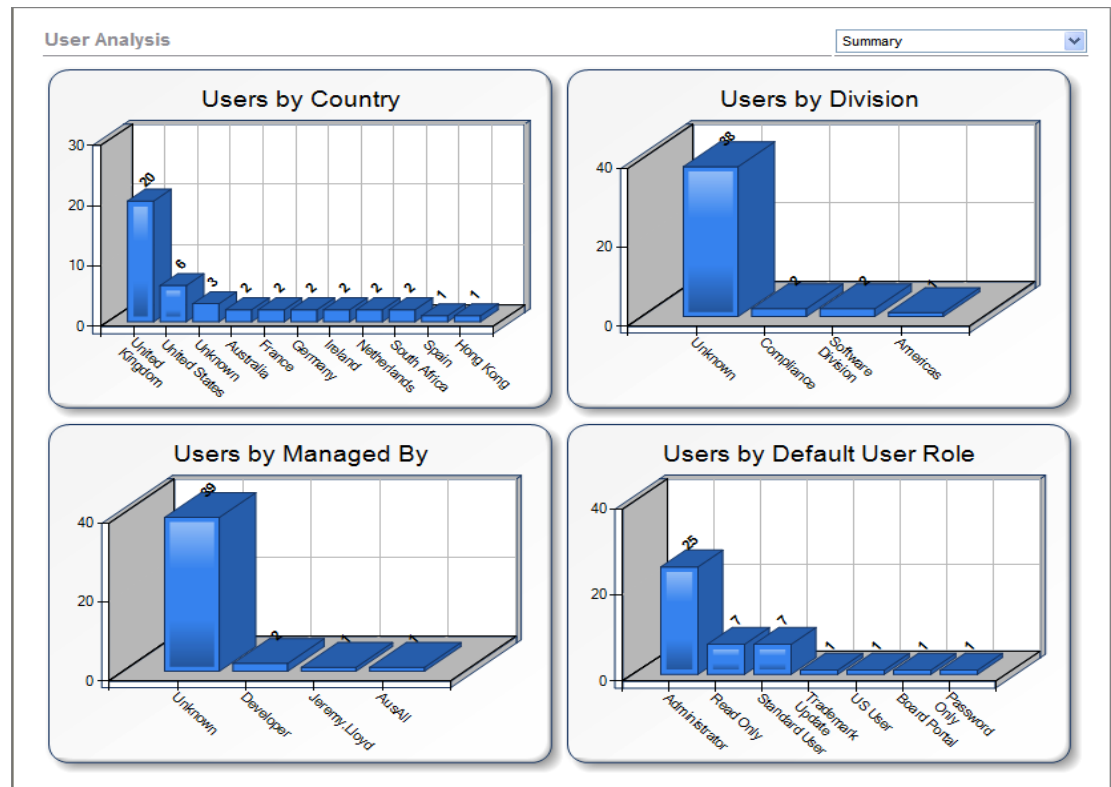
Next Cancel

Blueprint Data Room

- Share entity data and documents
- Publish to internal/external auditors
- Publish to investors, purchasers, vendors
- Fully customisable portal view
- Fully integrated Blueprint security
- Fully secure document publishing
 - Automatic “Sealing” with Oracle IRM



- Dashboard visually demonstrates key performance indicators
- Can “report” on any data within Blueprint
- Can dynamically “reach out” of Blueprint for additional data
- Use tables, gauges and charts to represent indicators
- Include dashboard in any portal anywhere in Blueprint



- **Improved process control and risk mitigation**

Blueprint Change Manager is a workflow tool that provides you with process automation as it manages, tracks, reviews and promptly reports entity changes.

- **Why choose Blueprint Change Manager?**

The Blueprint Change Manager workflow tool provides you with:

- Process automation
 - Improved control
 - Risk mitigation
 - Auditable change management, with tracking, reviewing and reporting
- Blueprint Change Manager manages the change process of your entity information and provides a complete record of the approval process for all transactions.

- **Harmonising governance and entity management**

Blueprint Review Manager is designed to assure the accuracy and timeliness of your entity data beginning with an automated review process .

- **Why choose Blueprint Review Manager?**

This internal audit system ensures that the policies and internal governance systems are being adhered to by:

- Providing periodic review and validation of all entity information
- Sending periodic email reminders to notify reviewers to check the data to verify and assure completeness and accuracy
- Permitting custom rules to be created to show users what areas of the database should be reviewed and validated
- Accurately overseeing the activities of subsidiaries

- **Providing fast, reliable, audit-ready company information**

Blueprint Change Report is designed to help you track and rapidly report on changes made to an entity or a group of entities for a selected time period.

- **Why choose Blueprint Change Report?**

This tracking and reporting tool will enable you to:

- Report on significant changes to an entity or a group of entities
 - Produce reports based on event date
 - Produce reports for a selected time period
 - Customize your reports
- You can specify what changes you deem to be significant, for example, a tax user may want ownership and company type changes but not appointment changes, for the last calendar year for all active companies.